



AMA
Chartered
Club
#1140

The Tail Spinner

Greater Southwest Aero Modelers

P.O. Box 1355

Bedford, TX 76021

<http://www.flygsw.org>



AMA Gold Leader Club

The Greater Southwest Aero Modelers, Inc. is a nonprofit organization. Membership is nondiscriminatory and open to anyone who agrees to abide by Club By-Laws. A condition of membership for insurance purposes is current affiliation with the Academy of Model Aeronautics (AMA). Our flying field is located at 6903 Randol Mill Road, 1/4 mile east of exit 26 off of Loop 820 at N 32°46.895' W 97° 12.361'. Visitors are welcome whenever the gate is unlocked. Free flight training instruction is available to members from 6:00 PM to dusk on Monday and Wednesday while Daylight Savings Time is in effect. Regular Club meetings are held on the second Tuesday of each month at 7:00 PM at the flying field during the summer months and at the North Richland Hills Parks and Recreation Building, 6720 Northeast Loop 820, North Richland Hills, TX 76180 (on the corner of Rufe Snow and NE820) during the winter..

Next Meeting:

**Tuesday
October 9, 2007
At the Field
7:00PM**

President	Tim Lovett.....	(817) 268-7797
Vice President(s)	Lee Rice	(817) 431-5408
Secretary	Sonny Coleman	(817) 251-3940
Treasurer	Tom Russell.....	(817) 457-3236
Newsletter Editor	Roy Baker.....	(817) 545-4031

President's Corner

TAG Event. Takeoff and Grow! October 6, Saturday, is our TAG event for the Temple Christian School that is our neighbor across Randol Mill Road. Frank Rowell has done a great job ramrodding this event, but he could use some more help if the crowd of children is as large as we think. Frank has spoken at a student assembly and the director of the school has the event listed on the sign in front of the school to remind parents, too. There will be food, flight simulators, buddy box instruction, a ground school, etc. to expose these kids to aero-modeling. There will also be some demonstration flights of helicopters, 3d flights, scale planes, fun-fly, and general sport planes. Come help at the field, please. I think this will be a great way to put back into our community.

All Scale Fly-In, Saturday, October 13. If it is a scale airplane, bring it to the field for a fun day of flying! Registration at 8am, flying from 9am to 4pm. \$20.00 includes a pilot lunch. Prizes for several categories. Max Ficken is the CD for the event. 817 498-4744.

There will also be a club fun-fly on Saturday, October 20. Lots of fun-fly events, food for pilots and prizes for the events. All for a \$10.00 entry fee. It is limited to GSW club members. Oh, and we won't be letting Lawrence mark off the poker card spaces!!!!

The weather is cooling down and we have a great looking runway. It looks better than I can ever remember. Lots of rain and a cooler summer have much to do with that, but we have a great

ground crew that mows and waters and fertilizes and on and on....Be sure you are willing to help them out if you are at the field when they need things moved to be able to mow the infield. Hey, grab a weed eater and help! I am certain they are not so jealous about the work that they won't share!

Another year is coming to a close. I am always amazed at how the years seem to be accelerating in speed. I urge you to come to the club meetings and be a part of the governing of the club. I also urge you to get out to the field to see how pretty it is.

See you at the field!

*Tim Lovett
President*

Finishing Tip by Ed Spann

When I am about ready to cover a model, I always have some final repairs to make. I cover and smooth blemishes with lightweight spackling such as Bondex. It sands nicely and does a good job except that it is dead white and shows through translucent or light colored coverings.

The solution: Tint the spackling with a very small amount of brown water color, or walnut water, or alcohol furniture stain. Adjust to a color that blends with balsa. With this, your patches are invisible! People will say, "How does he build so nicely?"—You don't have to tell them.

From the Bartlesville Falcons Model Club, Inc., Bartlesville, Oklahoma

October Event Calendar

OCT 05-07--Austin, TX (C) ARCA Fall Helicopter Fun-Fly. Site: Lester Field GPS: 30.324014, -97.603324. Sponsor: Austin RC Association #877. CD: Robert Price, 206 Breakaway Road, Cedar Park, TX 78613. Phone: 512-259-9232(day) 512-259-9232 (eve) E-Mail: rijpmodel@aol.com WebSite: www.austinrc.comRV parking and camping. RV electric, \$5/night. free pizza Fri night & 1 free lunch for pilots. Fajita cookout Sat night \$7. Night flying Fri & Sat night. Registration \$30.

OCT 06--Lake Dallas (C) Float Fly. Site: Wilow Grove Park. Sponsor: Falcons Of Lake Dallas #1949. CD: Gerald Sanders, 3337 Pine Tree Court, Farmers Branch, TX 75234. Phone: 972-247-7611(day) 972-247-7611 (eve) E-Mail: Floatflying@comcast.net Web-Site: www.falconsrclub.com Come fly with the Falcons at our bi-annual float fly. Landing fee \$15, pilots meeting 9 a.m. Frequency board; impound, bring AMA card. Improved camp sites available. Lunch available. Lots of prizes; lots of fun. If you would like to be notified of any changes or if you have any questions contact us at floatflying@comcast.net

OCT 06--Seagoville, TX (C) Dallas R/C Scale Fly-In. Site: DRCC Field GPS: 32.6436333, -96.575967. Sponsor: Dallas R/C Club #609. CD: Willie Ross, 222 Burkwood Drive, Rockwall, TX 75032. Phone: 469-698-9219(day) 214-499-0747 (eve) E-Mail: wa50p0@wmconnect.com WebSite: <http://>

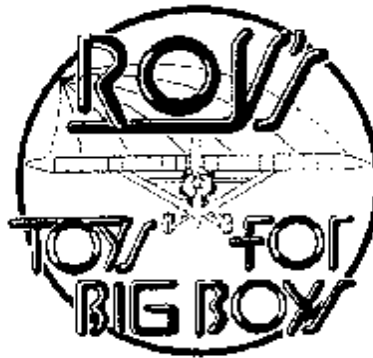
7336 Grapevine Hwy.
Fort Worth, Texas 76118
(817) 589-2624



Ding's Airport Pawn & Hobby

Confidential Loans

We Specialize in R/C Planes



ROY'S HOBBY SHOP

ALL THE RIGHT STUFF AT THE RIGHT PRICE
Radio Control Planes, Cars and Helicopters

1309 Norwood
Hurst, Texas 76053
Metro 268-0210

See Us for B&B (Bennett) Products
and Zenoah Engines

www.floatfly.net/Any Scale Airplane. 500ft. concrete runway, 500ft. grass. Come fly and have fun. Go to www.dallasrcclub.org for more information.

OCT 06-07--Dallas, TX (AA) Fall Stunt Clinic and Contest. Site: Samuel Garland Hobby Park. Events: Sat: P-40, Stunt Clinic; Sunday: 323-326 (JSO) Sponsor: Dallas Model Aircraft Association #1902. CD: Phillip Nickles, 6640 Champion, Midlothian, TX 76065. Phone: 972-223-2311(day) 972-223-2311 (eve) E-Mail: DebbieNickles@sbcglobal.net WebSite: <http://www.DMAA-1902.org/>

OCT 12--Parker, TX (A) TNT - Handlaunch. Site: Southfork Ranch. Events: 441 (JSO) Sponsor: Soaring League of North Texas #1957. CD: Tim Bennett, 138 Sandy Oaks Lane, Coppell, TX 75019. Phone: 214-850-

(Continued on page 3)

Tail Spinner Submissions

Items for the Tail Spinner are due by the 25th of the month. Remember that ads are free to members. Send them to:

Roy Baker
(817) 545-4031
(817) 455-0922 (cell)

(e-mail) rbaker19@tx.rr.com

September Secretary's Report

The September 2007 business meeting was called to order by Club President Tim Lovett at the club flying facility.

The Minutes of the August meeting as printed in the newsletter were approved as written.

New Members/Visitors: Rody Fanelli, Phil Richie, and Ricardo Silva

Old Business:

TAG Event: The TAG event will be held on October 6, 2007. The attending club members made and passed a motion for the club to allot up to \$200.00 for food to be served at the T.A.G. event.

Flight Instructors Report: Lead instructor Frank Rowell reported that Rody Fanelli made his first solo flight during the August training sessions. Congratulations Rody!

GSWAM All Scale Fly-In: On Saturday October 13th at 8:00 A.M. the Greater Southwest Aero Modelers will host the Seventh Annual All Scale Fly-In. There will be on-site concessions (food & soft drinks) available for both the participants and spectators. The \$20.00 landing fee includes the pilot's lunches.

Turn Sign: Max Ficken and Lawrence Harville painted and erected the large left turn sign at the south end of the runway, which is intended to remind all pilots to turn long before reaching Randol Mill Rd.

New Business

Bleacher Frame: The attending club members voted to give our new neighbors across the street at the soccer fields our spare bleacher frame. They will need to purchase and install the wood seating planks to complete the bleachers.

Fun Fly: A motion was made and passed for the club to have a fun-fly on October 20th for GSWAM club members only. There will be a \$10.00 landing fee that includes a pilot's lunch. Lawrence promises not to be the poker run card architect due the past postage stamp sized poker cards, yehaw!

Storage Container Update: After an extended discussion it was decided by the

attending members not to purchase a 40' long container, and to continue searching for a 20' storage container, which was deemed more user friendly than the longer 40' containers due to mower access concerns. A motion was made and passed to table the storage container discussion and any purchase decisions until the October business meeting.

Model of the Month: Dave Horton won the September Model of the Month Award with his .15 glow powered Sig Wonder, nice plane Dave!

Club Web Site: Be sure the visit the Greater Southwest Aero Modeler's web site at: <http://www.flygsw.org>. There is a current membership roster in the "Members" area and be sure to check out the club's "Tech" site, there's an abundance of useful information available.

Sonny Coleman - Secretary
817-251-3940
Sonny@flygsw.org

(Continued from page 2)

9605(day) 972-462-0784(eve) E-Mail: timben@verizon.net WebSite: www.slnt.orgTexas National Tournament - Southfork Ranch: www.Southfork.com GPS: 33.0437416, -96.6047527

OCT 12-14--Wichita Falls, TX (B) WFRCC Pylon Championship Series Race. Site: Lake Wichita Park. Events: 422 (JSO) Sponsor: Wichita Falls Radio Control Club #248. CD: Ken Reitsma, 3 Billie Circle, Wichita Falls, TX 76306. Phone: 940-851-7000(day) 940-855-5268(eve) E-Mail: reit8472@sw.rr.com Entries restricted to NMPRA members. GPS: 33.845269, -98.557478

OCT 13--Ft. Worth, TX (C) Greater Southwest Aero Modelers Club All Scale Fly-In. Site: Club Field, 6903 Randol Mill Road. Sponsor: Greater Southwest Aero Modelers Club #1140. CD: Max Ficken, 8216 Hallmark Drive, North Richland Hills, TX 76180. Phone: 817-691-9630(day) 817-498-4744 (eve) E-Mail: triplane@charter.net WebSite: www.flygsw.orgRegister @ 8a.m. Flying 9a.m. to 4p.m. Any size scale airplane. No Profiles; No Turbines. 600' X 75' manicured grass runway. On site concessions, raffles. Best WWI, WWII, Post WWII Military, Pilots choice and Civilian. Landing Fee: \$20 Known bad channels: 24, 25, 39, 40, 53, 54. .4 miles East of E Loop 820 on Randol Mill Road.

OCT 13-14--Parker, TX (A) TNT - Unlimited Class. Site: Southfork Ranch. Events: 444 (JSO) Sponsor: Soaring League of North

Texas #1957. CD: Barry Kennedy, 1935 High Valley TR., Grand Prairie, TX 75052. Phone: 972-602-3144(day) 972-602-3144(eve) E-Mail: bkennedy@kennedycomposites.com WebSite: www.slnt.orgTexas National Tournament - Southfork Ranch: www.Southfork.com GPS: 33.0437416, -96.6047527

OCT 20--Dallas, TX (AA) DMAA Fall Finale Speed. Site: Dallas Hobby Park, Northwest Hwy & Garland Rd., Dallas, TX. Events: 301-310 (Record ratio) (JSO); NASS Sport Jet. Sponsor: DMAA #1902. CD: Patrick Hempel, 304 Becky Lane, Rockwall, TX 75087. Phone: 972-231-2185(day) E-Mail: pempel@dataconninc.com WebSite: <http://www.dmaa-1902.org/>

OCT 20--Grand Prairie, TX (C) Big Bird Fly-In. Site: Fulton Field, 2820 E. Seeton Road. Sponsor: Golden Triangle RC Club #610. CD: David Cash, 2405 Kingston Street, Arlington, TX 76015. Phone: 817-274-9448(day) 817-274-9448(eve) E-Mail: ham2405@yahoo.com WebSite: www.gtrcc.orgAll Big Birds welcome. 60" biplane; 80" monoplane. AMA required to fly. Landing fee of \$20 includes pilot's lunch. Awards and raffle prizes all day. Fun food, and fellowship. Gates open at 8a.m. Directions to Fulton Field are available at <http://www.gtrcc.org>

OCT 20--Aubrey, TX (C) North Texas Combat - Operation Market Garden. Site: Club Field, 2060 Brewer Road. Sponsor: North Dallas RC Club #1238. CD: Ed Kettler, 6725 Grant Lane, Plano, TX 75024. Phone: 469-867-7981(day) E-Mail: ed.kettler3@verizon.net WebSite: www.ndrcc.com/maps.htmRCCA SSC and Scale 2548. AMA cards and hard hats required. Six rounds each of SSC and 2548 will be flown, followed by scale electric 3696 World War II fighters.

OCT 20-21--Lake Benbrook, TX (AA) Cowtown IMAC Regional Championships. Site: Thunderbird Field. Events: 411, 412, 413, 414, 415 (JSO) Sponsor: Fort Worth Thunderbirds #1217. CD: Rick Byrd, 2544 Creekwood Lane, Fort Worth, TX 76123. Phone: 817-291-7752 (day) 817-294-2048 (eve) E-Mail: rkbyrd@sbcglobal.net WebSite: www.fwthunderbirds.org \$35 entry fee; \$30 IMAC members. Contestant judging. Field open for practice Friday. No open flying Saturday or Sunday. Registration starts 7:30a.m. Saturday. Trophies awarded 1st thru 3rd all classes, JSO. GPS: 32.6391194, -97.4723583

OCT 27--Mansfield, TX (C) 3rd Annual Tailgate Swap Meet and Fly-In. Site: Club Field. Sponsor: Hawk Field Flyers of Texas #3369. CD: Ronald Colyer, 2106 Avalon Lane, Arlington, TX 76014. Phone: 817-680-6227(day) 817-861-4145(eve) E-Mail: rcolyer@sbcglobal.net WebSite: www.hawkfield.orgVendors and Pilots; \$10 Fee includes lunch. Fly what you bring. E-Combat will be held during the day and 3D pilots will be given special time. Come and enjoy the festivities. It all starts at 8:30 a.m.



GREATER SOUTHWEST AERO CLUB FOOD DRIVE

**DONATIONS OF NONPERISHABLE FOOD
ITEMS FOR THE NEEDY**

NOVEMBER 10, 2007

**COLLECTION AT THE FIELD STARTING AT
8:00 AM**

FOOD ON SITE.

OPEN FLYING AND

FUN FLY EVENTS FROM TIME TO TIME

DURING THE DAY

**COLLECTION WILL OCCUR AT THE FIELD REGARDLESS OF WEATHER
AND AT THE NOVEMBER MEETING.**

NO CHANNELS 24,25,39,40,53,54

SEVENTH ANNUAL GREATER SOUTHWEST AERO CLUB ALL SCALE FLYIN



SATURDAY OCTOBER 13TH

REG. 8:00AM FLYING 9:00AM TO 4:00PM

ON SITE CONCESSIONS

LANDING FEE \$20.00 INCLUDES PILOT LUNCH

PROP DRIVEN ONLY

ANY SIZE MODEL

STATIC DISPLAYS WELCOME

RAFFLES

BEST WW 1, WW2, CIVILIAN AND PILOTS CHOICE

CLUB FIELD RANDOL MILL ROAD AND E. LOOP 820

FORT WORTH, TEXAS

MAX FICKEN CD 817-498- 4744

TRIPANE@CHARTER.NET

No channels 24,25,39,40,53,54



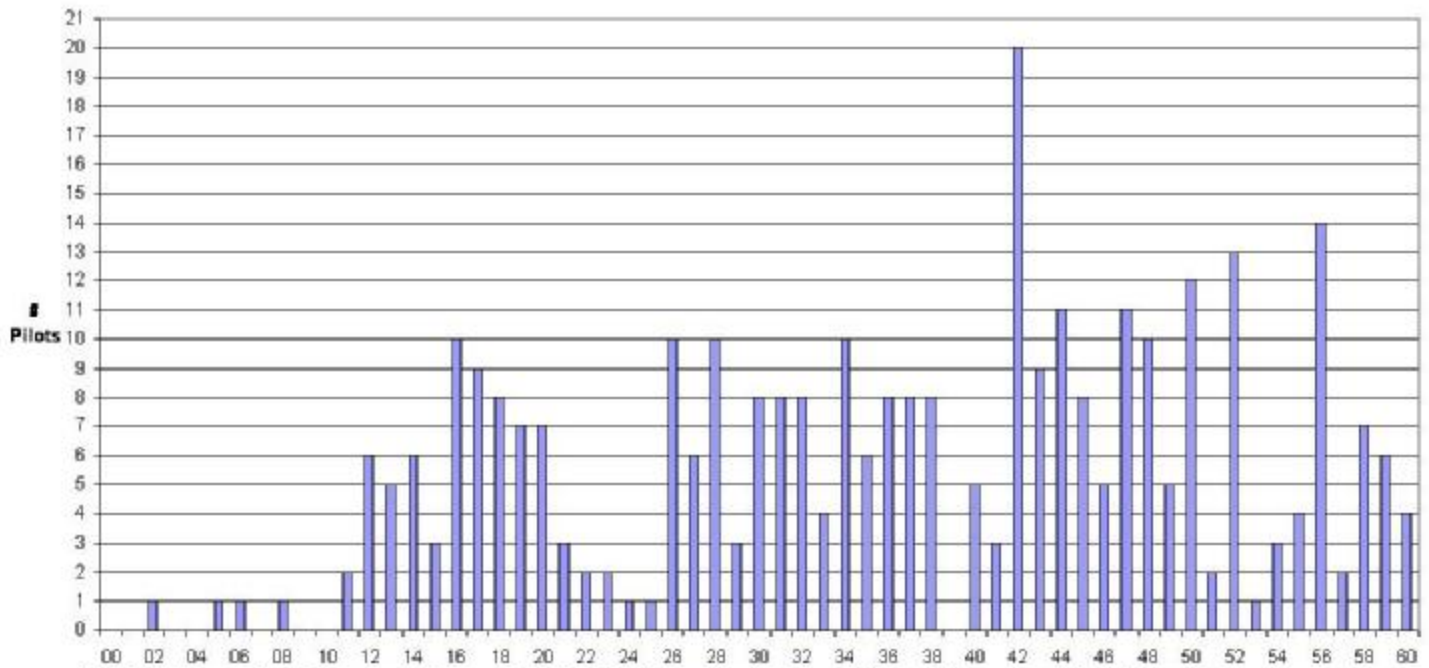
The Tail Spinner

Greater Southwest Aero Modelers
 P.O. Box 1355
 Bedford, TX 76021

Inside This Issue

- President's Corner*
- September Meeting Minutes*
- Upcoming Events*
- Frequency/Channel Usage*

2007 September
 Greater Southwest Modeler's Club
 Frequency/Channel Usage



NOTICE! There is interference on channels 24, 25, 39, 40, 53, and 54, therefore flying on these channels is banned.

Prepared and
 Maintained by Walt
 Fisher

Submit input to
wfisher@tx.m.com
 or (817) 540 - 5921

Interference on
 24, 25, 39, 40, 53, 54