



AMA
Chartered
Club
#1140

The Tail Spinner

Greater Southwest Aero Modelers

P.O. Box 1355

Bedford, TX 76021

<http://www.flygsw.org>



AMA Gold Leader Club

The Greater Southwest Aero Modelers, Inc. is a nonprofit organization. Membership is nondiscriminatory and open to anyone who agrees to abide by Club By-Laws. A condition of membership for insurance purposes is current affiliation with the Academy of Model Aeronautics (AMA). Our flying field is located at 6903 Randol Mill Road, 1/4 mile east of exit 26 off of Loop 820 at N 32°46.895' W 97° 12.361'. Visitors are welcome whenever the gate is unlocked. Free flight training instruction is available to members from 6:00 PM to dusk on Monday and Wednesday while Daylight Savings Time is in effect. Regular Club meetings are held on the second Tuesday of each month at 7:00 PM at the flying field during the summer months and at the North Richland Hills Parks and Recreation Building, 6720 Northeast Loop 820, North Richland Hills, TX 76180 (on the corner of Rufe Snow and NE820) during the winter..

President	Tim Lovett.....	(817) 268-7797
Vice President(s)	Lee Rice	(817) 431-5408
Secretary	Sonny Coleman	(817) 251-3940
Treasurer	Tom Russell.....	(817) 457-3236
Newsletter Editor	Roy Baker.....	(817) 545-4031

President's Corner

The January meeting brought forth much discussion on the proposed new dues structure. Those members in attendance worked over several paths of items to discuss for the new structure. With this newsletter is a copy of the Bylaws. The points that are proposed to be changed are printed in strikethrough letters with the replacement text in red. I encourage each member to carefully read the bylaw changes to understand them. If you have questions, you can call Lee Rice or me and we will be glad to discuss them with you. It was not an easy choice to raise dues, but unfortunately everything has gone up in price across the last 15 years or so. In short, the proposed dues changes are thus:

Raise the annual membership dues from \$60.00 to \$100.00 and the \$1.00 gate key fee will no longer exist.

The senior member discount of 50% off of the annual membership dues will end, and senior members pay the full annual dues amount of \$100.00.

The current initiation fee of \$20.00 will be raised to \$50.00.

Annual Youth membership dues will be \$5.00

Renewing members must provide their previous year's membership card in order to renew at a hobby shop, otherwise the previous year's membership will have to be verified

by a GSWAM club officer before the renewal process can be completed. Failure to provide proof of the previous year's membership constitutes a new member registration and the requirement of the payment of an initiation fee plus the annual membership dues.

The movement towards a higher rate is a compilation of several things. First and foremost is the fact of aging maintenance equipment. Second is the need for volunteers to do the work has sorely lagged in the last decade. Without volunteers, the work of upkeep around the field will have to be paid to laborers.

GSW has always placed 10% of the dues into savings for new field acquisition. That account was taken by the club to pay for the new runway and equipment for maintenance several years ago. That was done by vote, dissolving the savings structure. This effectively removed "funds for a rainy day". I think the funds were well used for very good purpose, but there are always effects from every decision. We have one of the nicest runways in the AMA! And that even includes some of the "paved" runways I have seen in travels across the nation. It is very few clubs that have a grass runway that will allow very small airplanes and retract equipped airplanes to fly without damage. Several of us have been to big-bird events where even the Extras, Caps, Yaks, etc. with fixed gear suffered damage from landing due to rough "pasture" grass runways. Our field also has more shelter than most. You enjoy cold water, electricity, tables for working, startup stands, good chairs, separate flying areas for different styles

(Continued on page 3)

Next Meeting:

February 12, 2008
7:00PM
NRH Rec Center

**Jan/Feb Event
Calendar**

JAN 18-19--Georgetown, TX (UnSanc) 11th Annual Swap Meet. Sponsor: Georgetown Aero Modelers Association. WebSite:

www.gamarc.org The Georgetown Aero Feb 24 - Fort Worth TX (UnSanc) H.O.R. Fun Fly. Site: Club Field -Greater Southwest Aero Modelers of Fort Worth TX. Starting time 11:00am. See flier in this issue for details.

FEB 23-24--Dallas, TX (C) Not President's Day Contest. Site: Dallas Hobby Park, Garland Rd & Northwest Highway, Dalla, TX. Events:

Saturday: Old Time Stunt; Sunday: P-40 Stun (B)(I)(A)(E), A.R.F Stunt(B)(I)(A)(E). Sponsor: Dallas Model Aircraft Association #1902. CD: Michael Scott, 1111 Park Dr., Hillsboro, TX 76645. Phone: 214-478-6263(day) 214-478-6263(eve) E-Mail: miksct@cs.com WebSite: <http://www.DMAA-1902.org> P-40: Profile fuselage only - .40 max displacement; A.R.F: All ARFs welcome. Pilots' meeting @ 9:30. All events: No Appearance Points

FEB 29-MAR 03--Weslaco , TX (Cr) IMAA 2008 Winter Rally of Giants. Site: Weslaco Airport, Weslaco, TX. Events: LF \$25, reg 9am fly 9:30 till ? RV PR food/bev; Limited on-site primitive RV parking. Please call for info on off-site RV accommodations. Food Vendors on-site daily, dinner Sat. night included in LF for pilots. Sponsor: Tejas R/C Association #2227. CD: Xavier Pruneda, . Phone: (956) 739-0340(day) WebSite: www.tejasrcassociation.org



**ROY'S
HOBBY
SHOP**

ALL THE RIGHT STUFF AT THE RIGHT PRICE
Radio Control Planes, Cars and Helicopters

1309 Norwood
Hurst, Texas 76053
Metro 268-0210

See Us for B&B (Bennett) Products
and Zenoah Engines

7336 Grapevine Hwy.
Fort Worth, Texas 76118
(817) 589-2624



**Ding's Airport
Pawn & Hobby**

Confidential Loans

**We Specialize in R/C
Planes**



Tail Spinner Submissions

Items for the Tail Spinner are due by the 25th of the month. Remember that ads are free to members. Send them to:

Roy Baker
(817) 545-4031
(817) 455-0922 (cell)

(e-mail) rbaker19@tx.rr.com

January Secretary's Report

The January 2008 business meeting was called to order by Club President Tim Lovett at the North Richland Hills Community Center.

Old Business:

Mall Show: The Mall show coordinators are to meet with the Northeast Mall management to schedule the date for the Mall Show.

Update: Harold Staats met with Northeast Mall management and was able to secure the club's Mall Show dates on February 9th and 10th, and the location will be in front of the Dillard's store. Hours would be flexible starting about 9:00 to 10:00 each day. Please contact Harold Staats at: haroldstaats@tx.rr.com (817-268-3915) if you can help work the show or have any questions regarding the Mall Show.

New Business:

Pylon Racing: The Greater Southwest Aero Modelers who attended the January business meeting voted to join two other local R/C clubs (Fort Worth Thunderbirds and The Texas Wings) in hosting three pylon racing events to be held on May 18th, June 8th and July 27th. The race fees are \$5.00 per event and each event lasts around four hours, so the club flying field will be closed to open flying during the pylon events.

Proposed Dues and Initiation Fee Changes: Due to the increasing costs of doing business, field equipment replacement needs, and the strong possibility of having to farm out our runway mowing duties to an outside contractor the Greater Southwest Aero Modelers club has proposed to the membership an increase in our annual dues, doing away with the senior member discount and raising the initiation fees. The attending club members voted for the following proposed changes:

1. Raise the annual membership dues from \$60.00 to \$100.00 and the \$1.00 gate key fee will no longer exist.
2. The senior member discount of 50% off of the annual membership dues will end, and senior members pay the full annual dues amount of \$100.00.
3. The current initiation fee of \$20.00 will be raised to \$50.00.

4. Annual Youth membership dues will be \$5.00

Renewing members must provide their previous year's membership card in order to renew at a hobby shop, otherwise the previous year's membership will have to be verified by a GSWAM club officer before the renewal process can be completed. Failure to provide proof of the previous year's membership constitutes a new member registration and the requirement of the payment of an initiation fee and the annual membership dues.

Flying Field Noise Guidelines: The attending club members discussed possibly utilizing the IMAC noise guidelines at our flying field in order to establish a baseline of acceptable noise generation from our aircraft. The noise guideline discussion was tabled and will continue at the February business meeting, so be sure to attend the next meeting.

Sonny Coleman - Secretary
817-251-3940
Sonny@flygsw.org

(Continued from page 1)

of aircraft. Each one of these items takes from the GSW resources. GSW AM members are responsible for the care and maintenance of these facilities, even to include the cost of brush hogging the fly-over areas several times each year. We have no help from City personnel, free water, Corps of Engineers, etc. Ours is 100% cared for by our own people. Most of our membership pays their dues, enjoys flying on one of the nicest fields (and the only field in Fort Worth proper), and does nothing more with regard to helping.

Many times the call for new people to help with the mowing, watering, weedeating, cooking, cleaning, etc. has gone by without much of a positive response from general membership. I applaud those members that have tirelessly given of their time and efforts to help with projects. But, do you recall when I said that all decisions have effects tied to them? Some of our maintenance crews have been doing the work of many and doing it for years. They need a break and some of them are older folks that don't need to be out in the heat.

This leaves the option of paying someone to do the work.

Many people do not realize the costs involved keeping a facility running. Every month there are bills that come in for water, electricity, garbage, portable toilet, and postage for mailing newsletters. Then there are many incidental items that truly come into play during the growing season. Those are the increase in the water bill by over \$200.00 per month, fertilizer, ant killer, grub killer, gasoline and oil. This also does not include the repairs to our aging equipment that has become a large expense across time. The tractors need some form of repair almost every month. Steve does a great job, but he can only do so much with what he has and we need to get at least one new one. The runway reel mowers are in need of replacement and the cost is \$2500.00. The sprinkler is getting worn and ready for replacement. The cost of a new one is \$1500.00.

I have checked with area clubs to see how their dues structure works. What I have found is this:

114th Aero Squadron - \$95.00 per year dues - 1 ½ times the annual dues as initiation. Source - website. And this doesn't get you a full membership, only associate.

Richardson R/C - \$50.00 per year dues - \$100.00 initiation. Club is in city park. Source - website.

Texas Wings - Website was no help, e-mail returned as undeliverable. Conflicting information on dues - \$85.00 or \$65.00, not certain who is correct.

T-Birds - \$65.00 per year.

Golden Triangle - \$75.00 per year - \$150.00 initiation fee, \$10.00 gate key fee. Source - website.

Hawk Field - \$75.00 per year - \$25.00 initiation fee.

Austin R/C - \$84.00 per year.

Many of these clubs are on public lands without lease fees. We are getting ready to have to pay a lease fee to the city. There is no way to know what the lease will cost until the attorney's are finished. I have been told that the lease for the club that would be about the same structure as ours was between \$5000-

(Continued on page 4)

(Continued from page 3)

\$6000 per year. Some of these clubs also have no large amount of maintenance, or are in parks where city crews take care of the work.

I think you can truly see that replacing equipment, watering our runway and infield, general upkeep and paying a lease is a large financial burden on the club budget. Tom has the annual figures from last year and the year prior for review. For most years we have ended the year with approximately \$1200-\$1400 in the bank. There has been nothing in case of emergency.

Come to the meeting and be a part of the government of your club! Come to the meeting and understand what it is all about!

Now, also don't forget the Mall show at NE Mall the weekend of February 9-10.

Z-bend Tip

Last week I was in the process of building a Dominator 500 for the upcoming races we're going to have at the GSWAM field. I found the instructions call for 4-40 rods with a Z-bend for the aileron servo. Putting aside my skepticism about the need for big rods on a .25 size racer, I set about to bend rods. Unfortunately, my Z-Bend pliers were sadly not up to the task!! In a stroke of luck, I found the following article on the January 2008 AMA National Newsletter:

From the Eagles' Nest, Saint Clair County, Michigan

The Perfect "Z" Bend

By Ed Olzewski

We all know a "Z" bend is the best way to connect a control rod to a servo horn. But often, bend results vary from good and tight, to a snakelike curve. A perfect "Z" bend can be made with your bench vice, with only one minor modification. Drill a hole in the vice jaw slightly larger than the rod you are using, down from the top of the vice the length you want the "Z" bend to be. The "Z" bend tool is complete. You are now the envy of every modeler you know.

#

The article was complete with pictures and the detail of how to make the bends. This sounded way to simple, and even better, a no-cost solution! Out to the garage, I drilled a 3/32" hole about 1/8" down from the top of my bench vise, inserted the 4/40 rod, tightened the vise to make the first bend, then used a ball peen hammer to bend down the second bend. Works perfectly, the bends are better than I've ever done with my \$20 pair of Z-bend pliers. Just goes to show that there are lots of good ideas on the AMA web site. Thanks for the tip, Ed.

Roy Baker

Tips & Tricks

Good Cleaner

Here is a concoction I came up with. In an empty spray bottle, add a tablespoon of dish washing detergent, then fill the bottle halfway with regular rubbing alcohol, and top off with hot water. I have found this to work really well for cleaning the oil off of the wings and fuselage after a days worth of flying. Strong cleaner but will not hurt the covering or take the colors off.

New Life to Old Wire Landing Gear

Did you ever have a problem where your wire landing gear seems to get weaker and weaker? A possible solution is to remove the gear from the airframe and remove all the hardware from the gear wire (i.e. the wheels, collars, pants, etc). Preheat your kitchen oven to 450°F. Place the wire on a cookie sheet in the oven for one hour. Turn off the oven and toss the wire into cold water to cool it off quickly. What you have just done is to re-temper the music wire and you should have put new life into that old gear. Note that soldered joints should not be harmed as solder doesn't melt until about 700°F.

Mixing Epoxy When mixing epoxy use an old coffee can lid, after the epoxy hardens just flex the lid and the epoxy will pop off.

For New Pilots

Here's a flying tip for new pilots: Something to pay attention to when learning to fly is control reversal. Control reversal is when the inputs on the transmitter sticks must be reversed when your airplane is flying toward you, rather

DUES INCREASE

Everyone agrees an increase is needed in club dues but how to apply the increase is the issue. When I was a kid I thought being retired meant retired folks had plenty of money, otherwise they would still be working. Little did I know! Fact is, when I retired my monthly pay was reduced significantly. I am fortunate in as much I receive a monthly retirement check plus Social Security. Not all of our senior citizens are as lucky as I am. Some only receive a monthly Social Security check. Social Security is not a retirement program. We all know cost of living and increase in wages are not equal. Our retirement and Social Security do not keep up with cost of living increases.

Please study and compare the next below before voting on the proposed increase in the annual dues for the club. Ask yourself, "is this a fair and reasonable increase for all?"

Present annual dues: \$60
Senior Citizen's dues: \$30

Proposed Change: \$100
Proposed Senior Citizen's dues: \$100

Percent of Change: 67%
Senior Citizen's Percent of Change: 300%

Club meeting is 7 PM at NRH Recreation Center, 12 February 2008.

Walt Fisher

than away from you. When flying away from you, there is no problem; just move the stick in the direction you want to turn. Many new pilots become disoriented when their airplane is approaching them. To help with this, move the stick in toward the low wingtip. This will level the wing when your airplane is coming toward you, avoiding a sharp bank and possibly a crash.

Example: Say your airplane is coming toward you, and the right wingtip is low, as if banked to the right. Move the stick to your left, toward the low wingtip. This will bring the airplane's right wingtip up, and level the wing. I also recommend getting Real Flight G2 if you do not have it. Practice on that before you fly an airplane or helicopter for the first time or if you have been away for an extended period of time. It will save you money and heartaches in the future.

BY-LAWS
GREATER SOUTHWEST AERO MODELERS
AMA CHARTERED CLUB 1140
FORT WORTH TEXAS

GLOSSARY OF TERMS

APPLICATION PROCESSING FEE: A fee assessed to anyone joining the club who was not a member in good standing the previous year.

CLUB MEMBER: Shall be an individual in good standing with AMA and the club.

DUES: Membership fees charged to individuals of good standing with AMA to join GSWAM.

EMERITUS MEMBER: An honorary and permanent title granted by the President to a non dues paying member with no gate key, no flying or voting privileges.

FAMILY MEMBER: (1) Spouse of a senior member in good standing (2) children of a senior member in good standing by birth or adoption under the age of 18.

FEE: Payment required for membership, goods, services, benefits, and privileges.

GOOD STANDING: Shall be a current AMA member who is current in all GSWAM dues and fees.

JUNIOR MEMBER: Shall be a member under the age of 18.

NEW MEMBER: Shall be an AMA member joining the club who was not a member in good standing with the club the previous year.

NLT Not later than.

ODA: Other Duties Assigned.

REJOIN: The act of joining the club after a period of absence of at least 1 year shall be considered a New Member and must pay appropriate fee/dues.

RENEWAL: The act of renewing one's membership of the previous year and maintaining one's current good standing status with the club.

SAB: Same As Above.

[SENIOR CITIZEN: Shall be 62 years old as of 1 January.]
Delete

SENIOR MEMBER: Shall be an AMA member and a club member 18 or older.

QUORUM: (1) 50% of members in good standing in attendance of a business meeting (2) 15 members in good standing in attendance of a business meeting.

YOUTH MEMBERSHIP: Shall be a one calendar year temporary status granted to a minor under the age of 16 who is an AMA member, and is not a GSWAM family member. No voting privileges. The following calendar year the individual shall be considered a New Junior Member and shall pay application processing dues and fees.

ARTICLE I: NAME: The name of this club is GREATER SOUTHWEST AERO MODELERS (GSWAM) Fort Worth Texas and may be referred herein as "the club".

ARTICLE II: PURPOSE: GSWAM's purpose is to aid, assist, and encourage building and flying of model aircraft.

ARTICLE III: MEMBERSHIP: (Amended June 2007)

A. Qualifications: A member shall be in good standing with Academy of Model Aeronautics (AMA). Shall pay appropriate dues as set forth in paragraph 3B.

B. Dues: Dues are non refundable and include a gate key. Dues are as follows:

[(1) New Member \$20 application processing fee, and \$60 annually. New Member's annual dues shall be prorated semi annually i.e., January through

December is \$60, and July through December is \$30.00. A partial period is considered a whole period.] Delete

(1) New Member \$50 application processing fee, and \$100 annually. New Member's annual dues shall be prorated semi annually i.e., January through

June is \$100, and July through December is \$50.00. A partial period is considered a whole period.

(2) Renewing senior member, \$100 annually regardless renewal date.

[(3) Senior citizen, one half of the required annual dues.] Delete

(4) Family Member, \$0 for the membership[, but \$1 gate key fee if needed] delete

(5) Junior Member, \$50 annual dues.

[(6) Youth Membership, \$2 annual fee (not prorated).] delete

(6) Youth Membership, \$5 annual fee.

(7) Officers, dues are waived the year following a full term (12 months) in office.

(8) Emeritus Member shall be permanently designated by the President with dues waived.

[(9) There will be a \$1 gate key fee added to each membership. Thus a Senior citizen will pay \$30 in dues, plus \$1 for a key = a total of \$31.00]Delete

NOTE: Dues may be changed by 2/3 approval of a quorum.

- C. Resignation: Any member in good standing may resign their membership by given written notice to the club. There will be no refund of dues.
- D. Termination: If any member ceases to have the qualification necessary for membership in the AMA, their membership in the Club shall thereby terminate subject to reinstatement upon restoration of eligibility.
- E. Expulsion: This section provides for enforcement of the Safety Rules that are related to flying activities or any other unacceptable behavior by the member(s). Any individual expelled may be reinstated by a 2/3 approval vote of the quorum if in the officers' determination, such individual willfully commits any act or omission which is a violation of any of the terms of these By-Laws, or Rules of the AMA, or which is detrimental to the Club, the AMA, or to model aviation.
- F. Reinstatement: A 2/3 vote of approval of a quorum is required for reinstatement prior to 1 January the year following the expulsion.

ARTICLE IV: BOARD OF DIRECTORS (BOD)

A. OFFICERS and DUTIES

(1) **PRESIDENT** shall be the chairperson at all meetings of GSWAM when possible. Shall be the spokesperson to the media in all matters pertaining to the club.

(2) **VICE PRESIDENT** shall act in the same capacity as the President when the President is absent. When the President is unable to serve; the Vice President shall become the

President. Shall be responsible for field maintenance and safety. Will procure Name Badges as requested. ODA by the President.

- (3) SECRETARY shall record the minutes of all business meetings, maintain current club roster, announce scheduled and special business meetings, coordinate with and processes correspondence between GSWAM and AMA as necessary to satisfy AMA administrative requirements, maintains the Constitution, the By-Laws, the Field Regulations, by incorporating any and all approved changes to said documents in a timely fashion, provides membership applications, cards, keys to the hobby shops processing our membership applications, orchestrates the changing of the gate locks on 31 January and obtaining necessary keys to support our membership. ODA assigned by the President.
 - (4) TREASURER shall collect all money due to GSWAM (dues, fees, special assessments, donations, contest entry fees, auctions, raffles, etc). Shall pay all club debts and maintain accurate record of money received and disbursed. Shall make financial records available for all members' perusal when requested. ODA by the president.
 - (5) NEWSLETTER EDITOR shall assemble, edit, print, and mail the club's newsletter so all members receive the newsletter prior to the next scheduled business meeting. ODA by the president.
 - (6) Appointed Officers are Safety Officer, Field Marshall, Training Officer, and the Field Event/ Activity Officer. Each officer shall perform duties commensurate within their office. Appointments expire at the end of the calendar year.
- B. Term of Office: Officers are elected annually and the term of office shall expire at the end of the calendar year.
- C. Nominations for the BOD: Nominations for Office shall be made in October. Nominations may be from the floor or by letter.
- D. Primary Elections: Primary Elections shall be in November using a paper ballot.
- E. Special Elections: Shall be held to fill a vacated office as necessary using a paper ballot.
- F. Quorum: Shall be of 50% of the members in good standing or 15 such members present, whichever is lesser to constitute a meeting.
- G. Recall: A 2/3 approval vote of a quorum is required to recall an elected officer.

ARTICLE V: MEETINGS shall be on the 2nd Tuesday at 7PM monthly at a place to be determined by the membership. Special meetings may be called by the President or 50% of the membership. A reasonable effort shall be made to notify all members of the meeting NLT 3 days prior to the meeting. Notification shall include date, place, time, and agenda. When possible the President shall preside over all meetings. Minutes shall be recorded and published so all members are aware of the meeting's out come. Robert's Rules of Order shall apply during all GSWAM meetings.

ARTICLE VI: FLYING FIELD is open to all members in good standing. Field Regulations must be followed. Pilots

operating a transmitter on an Amateur Radio frequency must hold a valid FCC Amateur Radio Operator License. An expenditure for field maintenance in excess of \$300 must be approved by 2 club officers.

ARTICLE VII: COMMITTEES shall be appointed by the President. They may be for a special project and terminate upon completion, or they may be for a period of time. All appointments shall expire at the end of the calendar year. The new President shall reappoint/reaffirm all committees/appointments by or during February's business meeting.

ARTICLE VIII: AMENDMENTS to the By-Laws requires 2/3 approval of a quorum. A reasonable effort shall be made to notify all members of the proposed amendment(s) NLT 3 days prior to the day the amendment will be considered for approval.

ARTICLE IX: MISCELLANEOUS PROVISIONS, the duration of the club shall be perpetual. The club may be dissolved with a 2/3 approval vote of the **TOTAL MEMBERSHIP**. A reasonable effort shall be made to notify all members of the meeting, to dissolve the club NLT 3 days prior to the meeting.

ARTICLE XI: VIOLATION DISCIPLINE PROCEDURES

1st Violation: 3 witnessing members sign the violation form listing the Field the Safety Regulation violation and ask violator to *sign the form. Give the form to the Safety Officer.

2nd Violation: SAB plus a one month suspension of field privileges imposed by the Safety Officer.

3rd Violation: SAB plus member is suspended by the President until next meeting when, if present, the individual may argue his case to the membership. Ultimate disposition will be determined by a majority vote of a quorum. If expelled, the individual must surrender club card and gate key. The individual may rejoin the club 1 January as a New Member and shall pay appropriate dues/fees.

Any member receiving a violation form, who directs any retaliation action against the person(s) reporting the violation(s) will be subject to immediate expulsion from the club by the President. This includes threats, intimidation, physical harm, intentional equipment damage, or other action deemed to be retaliatory by the club officers.

*If individual refuses to sign the form make necessary notation and a copy of the form will be mailed to the person.

FEBRUARY 24, 2008

IT'S TIME TO DUST OFF YOUR H.O.R

**GREATER SOUTH WEST AERO
MODLERS
OF FORT WORTH TX.**

START TIME 11:00 AM

**H.O.R. AIRPLANES
.15 SIZE MOTORS 8X3 MASTER AIR SCREW PROP**

NO EXCEPTIONS

MUST HAVE AMA MEMBERSHIP

LANDING FEE \$15.00 LUNCH INCLUDED

**COMBAT
PLYON RACING
CLIMB&GLIDE**

SPOT LANDING ON ALL FLIGHTS

FOR INFORMATION

**HERB ROUNDY AT 817-343-2385
BERRY PONDER AT 817-688-6149**

OR

WEB SITE: www.flygsw.org





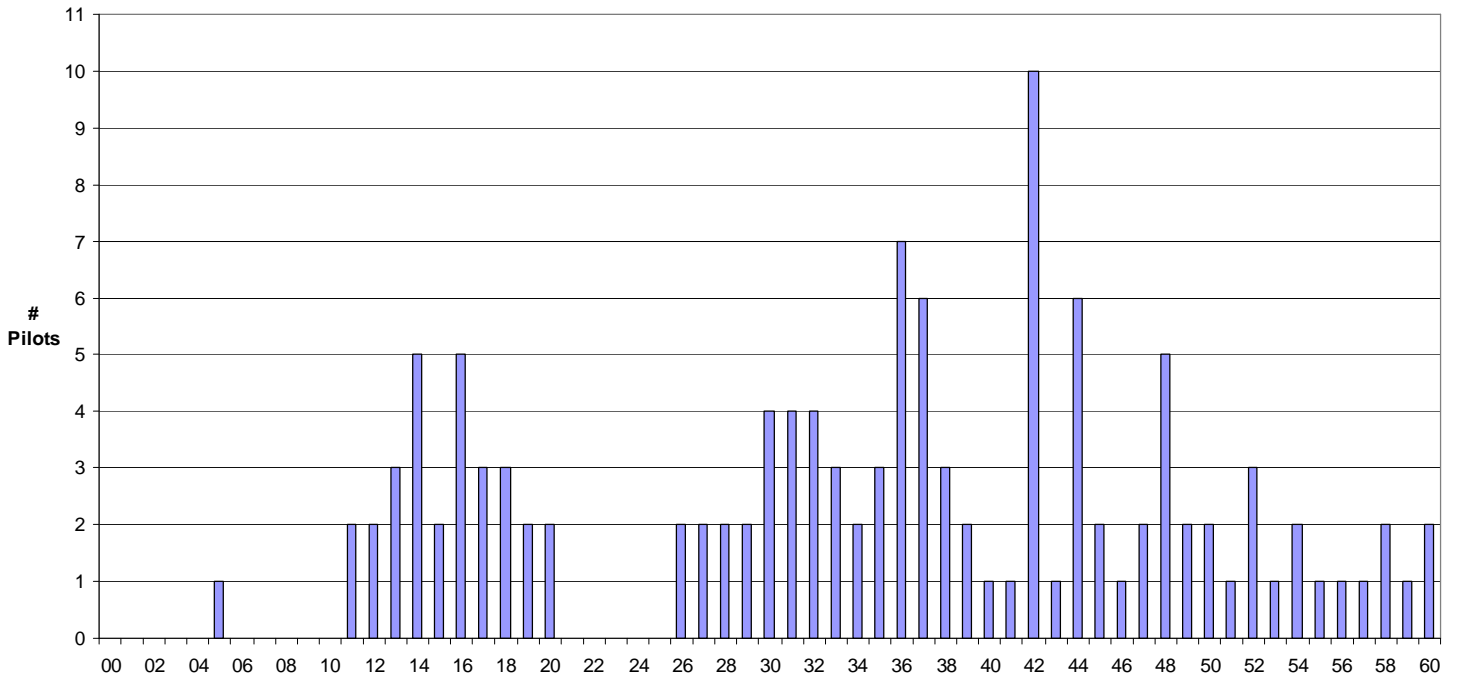
The Tail Spinner

Greater Southwest Aero Modelers
P.O. Box 1355
Bedford, TX 76021

Inside This Issue

President's Corner
Secretary's Notes
GSWAM Proposed Bylaws Changes
Tips
Frequency/Channel Usage

2008 - January Greater Southwest Modeler's Club Frequency/Channel Usage



NOTICE! There is interference on channels 24. 25.39.40.53. and 54. therefore flying on these channels is banned.